

MONTHLY MEMBERSHIP PROGRESS REPORT

District 2 S1

Results as of: 3/31/2024

GMT:

LOCATION TEXAS

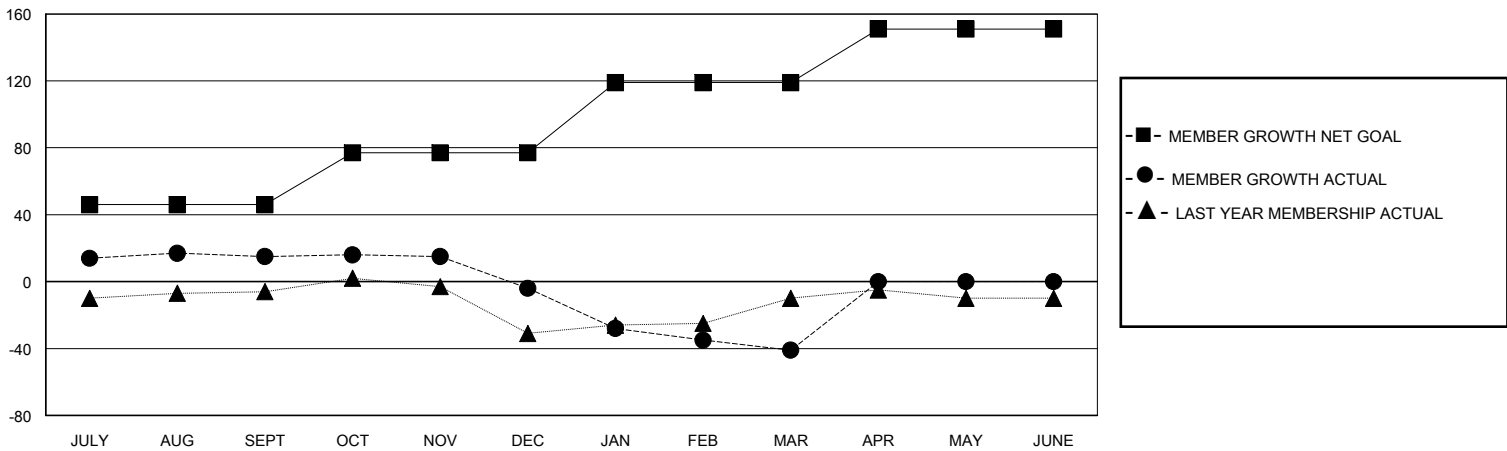
GMT CA

Clubs				Members			
RESULTS FOR 2023-2024				RESULTS FOR 2023-2024			
QUARTER	NEW CLUB GOAL	NEW CLUBS	DROPPED CLUBS	QUARTER	MEMBER GROWTH NET GOAL	MEMBER GROWTH ACTUAL	DROPPED MEMBERS ACTUAL (including transfers)
JULY/AUG/SEPT	0	0	0	JULY/AUG/SEPT	46	58	41
OCT/NOV/DEC	0	0	0	OCT/NOV/DEC	31	33	51
JAN/FEB/MAR	1	0	0	JAN/FEB/MAR	42	29	64
APR/MAY/JUNE	0	0	0	APR/MAY/JUNE	32	0	0

GOALS AND ACTUAL NEW CLUBS CUMULATIVE



GOALS AND ACTUAL MEMBERS CUMULATIVE



DROPPED CLUBS: 0	30 CLUBS OF 44 ADDED 1 OR MORE NEW MEMBERS	GENDER DISTRIBUTION MALE 1,030 (71.38%) FEMALE 413 (28.62%)
DROPPED MEMBERS DECEASED 17 CLUB CANCELLED 0 OTHER 139 TOTAL 156	CLICK HERE FOR CUMULATIVE MEMBERSHIP DATA	TOTAL FAMILY UNIT MEMBERS 228 FAMILY MEMBERS PAYING HALF DUES 117